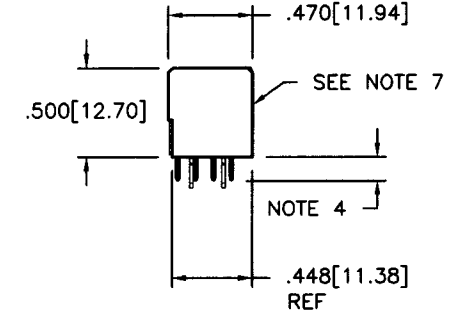
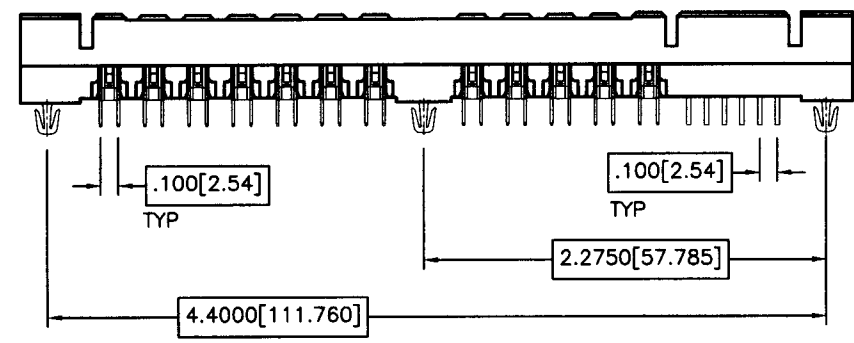
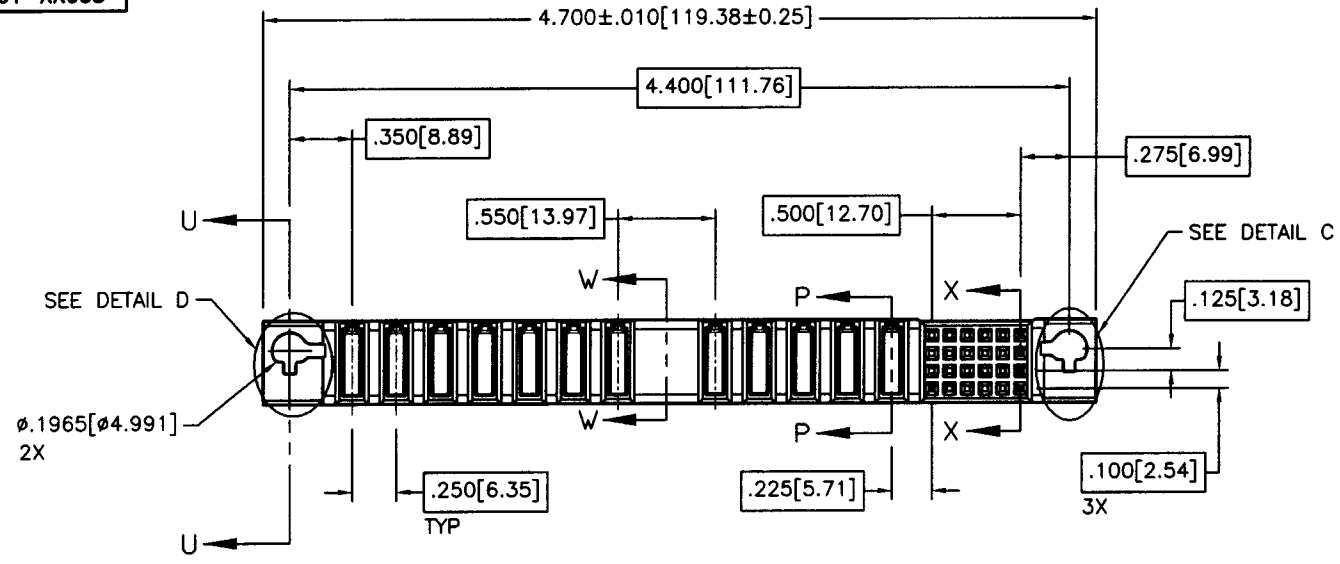


Tous droits strictement reserves. Reproduction ou communication a des tiers interdite sous quelque forme que ce soit sans autorisation ecrite du proprietaire. Propriete de ©BERG ELECTRONICS. Droits de reproduction BERG ELECTRONICS INC.

All rights strictly reserved. Reproduction or issue to third parties in any form whatever is not permitted without written authority from the proprietor. Property of ©BERG ELECTRONICS Copyright BERG ELECTRONICS INC.



PRODUCT NO.
51261-XX003



mat'l. code				tolerances unless otherwise specified		CUSTOMER COPY		BERG ELECTRONICS	
NOTE 2								title	
ltr	ecn no	dr	date	linear	.XX ±.01/ .X±.3	projection		PWRBLADE VERT. RECPT/BLADE	
A	V81258	MSC	6/23/98		.XXX ±.005/ .XX±.13	INCH/MM		12 PORT, 24 SIG.	
B	V81303	MSC	7/9/98	angles	.XXXX ±.0020/ .XXX±.051	scale		product family HPC code	
				dr	0° ±2'	1:1		size	
				enr	M.CLOUSER 7/9/98			A 51261-XX003	
				chr	J.BROWN 7/9/98			sheet	
				appd	J.BROWN 7/9/98			1 of 4	
sheet index	revision sheet	B 1	B 2	B 3	B 4			cage code	
								22526	

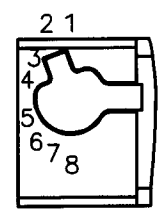
Tous droits strictement réservés. Reproduction ou communication à des tiers interdite sous quelque forme que ce soit sans autorisation écrite du propriétaire.
 Propriété de ©BERG ELECTRONICS. Droits de reproduction BERG ELECTRONICS INC.



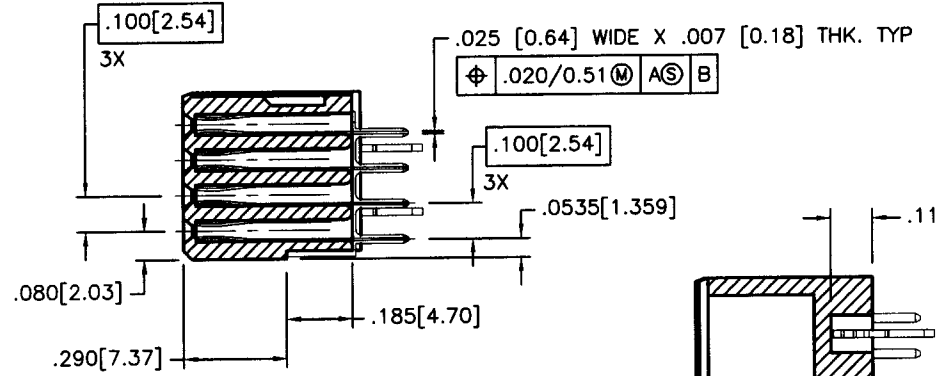
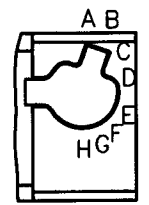
All rights strictly reserved. Reproduction or issue to third parties in any form whatever is not permitted without written authority from the proprietor.
 Property of ©BERG ELECTRONICS Copyright BERG ELECTRONICS INC.

PRODUCT NO.
51261-XX003

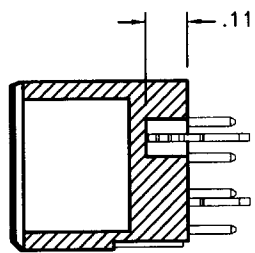
DETAIL D
 (CODE 2 SHOWN)



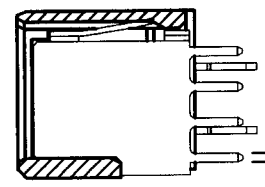
DETAIL C
 (CODE B SHOWN)



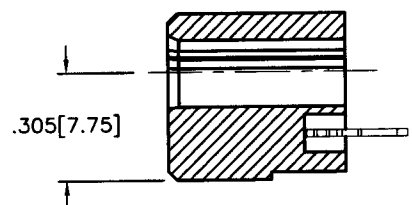
SECTION X-X



SECTION W-W



SECTION P-P



SECTION U-U

NOTES:

- ① THIS PRODUCT IS CONFIGURED WITH 24 SIGNAL AND 12 POWER CONTACTS.
- ② HOUSING MATERIAL: 30% MIN GLASS FILLED LCP
 SIGNAL CONTACT MATERIAL: BERYLLIUM COPPER
 POWER CONTACT MATERIAL: BERYLLIUM COPPER
3. PLATING:
 SIGNAL PINS: 50u"/1.27u Ni UNDER ALL; WITH 30u"/.76u Au ON CONTACT AREA, AND SnPb ON PCB INTERFACE. Au FLASH ON ALL OTHER AREAS.
 POWER CONTACTS: 50u"/1.27u Ni UNDER ALL; WITH 30u"/.76u Au ON CONTACT AREA, AND SnPb ON PCB INTERFACE.
- ④ TAIL LENGTH:
 l = 0.135 ± .010 [3.43 ± .25]
5. ALFA KEYING POSITION: "H"
6. NUMERIC KEYING POSITION: "8"
- ⑦ "BERG" NAME, P/N, AND LOT CODE TO APPEAR ON THIS SURFACE PER BERG BUS-12-108.
8. FOR DOCUMENTATION MENU, SEE BERG BUS-01-071
9. MANUFACTURE AS PER BUS-24-016

mat'l. code NOTE 2				tolerances unless otherwise specified		CUSTOMER COPY		BERG ELECTRONICS	
ltr	ecn no	dr	date	linear	projection	title			
B					linear	PWRBLADE VERT. RECPT/BLADE			
					angles	12 PORT, 24 SIG.			
					dr	M.CLOUSER	7/9/98	product family	POWERBLADE
					enr	J.BROWN	7/9/98	code	-
					chr	J.BROWN	7/9/98	size	dwg no
					appd	J.BROWN	7/9/98	scale	1:1
sheet	revision							product family	POWERBLADE
index	sheet							code	51261-XX003
								sheet	2 of

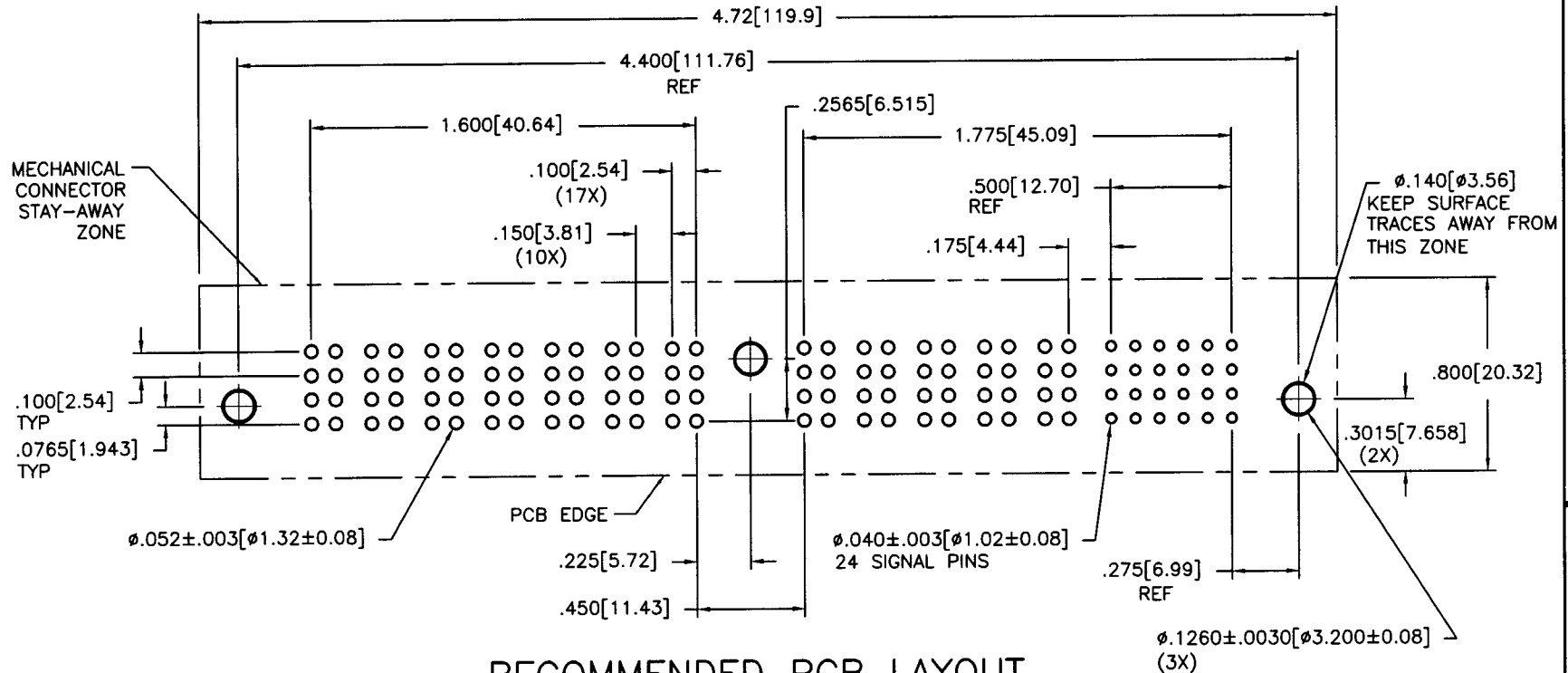
Tous droits strictement reserves. Reproduction ou communication a des tiers interdite sous quelque forme que ce soit sans autorisation écrite du propriétaire. Propriete de ©BERG ELECTRONICS. Droits de reproduction BERG ELECTRONICS INC.



All rights strictly reserved. Reproduction or issue to third parties in any form whatever is not permitted without written authority from the proprietor. Property of ©BERG ELECTRONICS Copyright BERG ELECTRONICS INC.

PRODUCT NO.

51261-XX003



RECOMMENDED PCB LAYOUT

ALL DIAMETERS ARE TRUE POSITION WITHIN 0.004" UNLESS OTHERWISE SPECIFIED

NOTE:

1. ALL DIAMETERS ARE FINISHED HOLE SIZE.
2. $\phi .1260 / 3.20$ THROUGH HOLES ARE UNPLATED.
3. ALL DIMENSIONS ARE BASIC UNLESS OTHERWISE SPECIFIED.

mat'l. code				tolerances unless otherwise specified			CUSTOMER COPY		BERG ELECTRONICS	
ltr	ecn no	dr	date	linear	angles	projection	title		product family	
B				.XX ±.01 / .X±.3	0° ±2'		PWRBLADE VERT. RECPT/BLADE		POWERBLADE	
				.XXX ±.005 / .XX±.13			12 PORT, 24 SIG.		code	
				.XXXX ±.0020 / .XXX±.05		INCH/MM	size		-	
		dr	M.CLOUSER	7/9/98		scale	A 51261-XX003		sheet 3 of	
		enfr	J.BROWN	7/9/98		1:1				
		chr	J.BROWN	7/9/98						
		appd	J.BROWN	7/9/98						
sheet index	revision sheet									

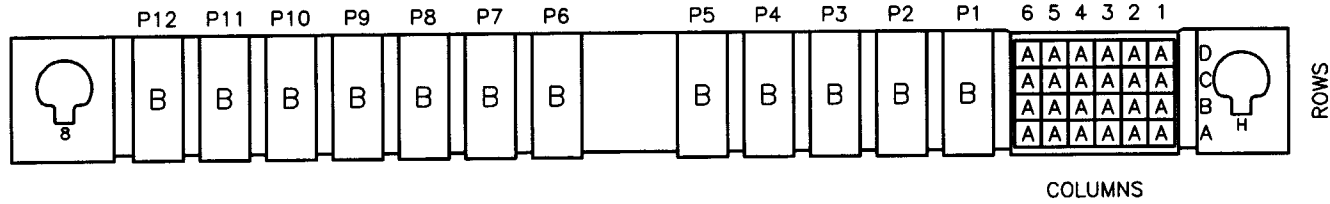
Tous droits strictement reserves. Reproduction ou communication a des tiers interdite sous quelque forme que ce soit sans autorisation écrite du propriétaire.
 Propriete de ©BERG ELECTRONICS. Droits de reproduction BERG ELECTRONICS INC.



All rights strictly reserved. Reproduction or issue to third parties in any form whatever is not permitted without written authority from the proprietor.
 Property of ©BERG ELECTRONICS Copyright BERG ELECTRONICS INC.

ITEM	SIZE-4X6+12 PORTS	NUMBER OF POS. 24+12 PORTS	POSITIONS LOADED-24
	PLATING--30u"/.76u Au	SOLDER TAIL STYLE--TERM P/N 92646	
	QTY.	PART NUMBER	TAIL LENGTH ±.010/0.25
A	24	92646-005	.135/3.43
B	12	51141-001	.135/3.43

HOUSING P/N 51515-8024H



CUSTOMER: IBM

NOTES:

1. COLUMN 1, ROW A IS DESIGNATED AS PIN 1, AS VIEWED FROM THE MATING FACE.
4. INSTALL HOLD DOWN P/N 51441-001. HOLD DOWN AVAILABLE IN LIMITED QUANTITIES ONLY. PRODUCTION TOOLING NOT AVAILABLE.

SELECT LOAD SHEET

mat'l. code				tolerances unless otherwise specified		CUSTOMER COPY		BERG ELECTRONICS			
NOTE 2											
ltr	ecn no	dr	date	linear	.XX ±.01/ .X±.3	projection		title			
B					.XXX ±.005/ .XX±.13			PWRBLADE VERT. RECPT/BLADE		code	
					.XXXX ±.0020/ .XXX±.051			12 PORT, 24 SIG.		-	
				angles	0° ±2'	INCH/MM		product family POWERBLADE		code	
				dr	M.CLOUSER 7/9/98			size		dwg no	sheet
				enr	J.BROWN 7/9/98			A 51261-XX003		4 of	
				chr	J.BROWN 7/9/98			scale		1:1	
				appd	J.BROWN 7/9/98						
sheet index	revision sheet										